

84" High Density Baler (Model 84 HDVB)

84" High Density Baler

(Model 84HDVB)

To request a Quote or to Purchase this product online:

84-HDVB - [Click Here](#)

Leasing:

Monthly payment calculator - [Click Here](#)
For a printable application - [Click Here](#)

Rental Program:

For Rental information - [Click Here](#)



Ideal for:

- Recycling Centers
- Supermarkets
- Department Stores
- Retail Stores
- College & Universities
- Transfer Stations
- Hotels / Resorts
- Manufacturing Facilities
- Military Bases
- Shopping Centers
- Other Industrial & Commercial Sites

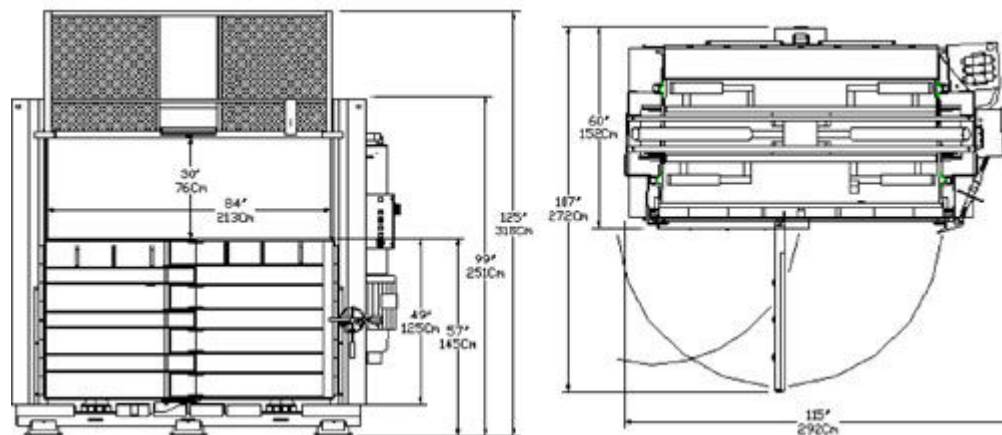
- **Reduces** waste disposal costs
- **Saves** labor and time making your operation more profitable
- **Improves** your business appearance and increases workplace safety

Featuring

- Powerful Twin 6" Cylinders with Heavy Duty 3.5" Rods for Extra Long Life
- Heavy Duty 20 Horsepower Motor for Extra Long Life
- Unique Hydraulic Circuit for High Speed Applications
- UL Listed Control Panel
- Operates Under a 12 Foot Ceiling
- Standard Retractable Bale Dogs for Maximum Material Containment
- Standard Voltage Electrical Disconnect Included
- Enclosed Counterbalance for Upper Door Lifting Ease
- Dual Hydraulic Ejection for Extra Dense Bales
- Stronger Heavy Duty Construction than Comparable Balers
- No Fluffing of Material Necessary
- Slots for Tying Bales
- Meets or Exceeds All ANSI and OSHA Safety Standards

84" High Density Baler (Model 84 HDVB)

84HDVB Specifications	
Bale Size:	84" X 84" X up to 48"
Ram Pressure:	127,235 lbs. Max
Cylinders:	Two 6" Bore, 3.5" Rod, 28" Stroke
Motor / Electrical:	20 HP
Electrical Power:	208/230/460 Volt, 3 Phase
Pump:	12 GPM
Overall Height:	125"
Width	115"
Depth	60"
Bale Ejection	Hydraulic / Chain
Bale Tying:	Wire or Banding
Depth with Door Open:	107"
Shipping Height:	99"
Loading Door Opening:	30" X 84"
Unloading Door Height:	49"



Specifications subject to change without notice