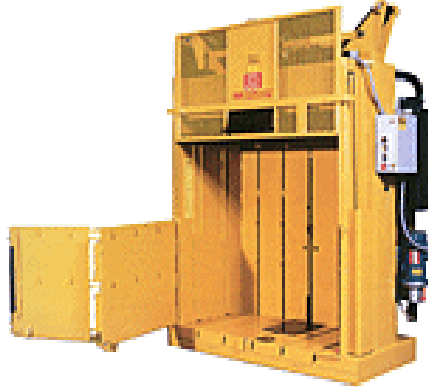


60" Extra Low Profile Vertical Baler (Model 60-LPVB)



Typical Baling Uses and/or Approximate Weights ('Up To' Weights)		
Material	Bale Weights (Approx)	Bales / Hour (Approx)
Cardboard	900	2
PET		
Metal Cans		
Foam / Film		

Note: Performance Rates, Bale Weights, and Bale Densities are subject to many factors such as Material Pre-Bale Densities, Feed rates, Moisture Content and other variables.

60" High Density Vertical Baler Features
Fully UL Listed Complete Machine
3 Phase – 208 / 230 / 460
Compact Height Design means it can operate under a standard ceiling
Key Operated Selector Switch
Non-Locking Casters
Loading Door Platen Interlock
Simple Operation with Operation, Loading, Compacting, Tying from front of Machine
Bale Ejects Hydraulically
Two Stage Pump
I Beams and Heavy Channel used throughout
Photo Eye operation of Ram / Loading Door
Twine Tie Package

60" High Density Vertical Baler – Main Options	
Description	Description
Single Phase Motor (5 HP Balers)	Special Voltage – 575V – 3 Phase
Right Hand Hinged Unloading Door	Oil Reservoir Heater
Lower Door Safety Cover	Wire Guide Package – 4 Tie
Oil Level Sight Gauge	Twine for Bale Ties (4 Balls)
Bale Full Indicator Light	

60" Extra Low Profile Vertical Baler (60-LPVB) – Specifications & Dimensions

60" Extra Low Profile Vertical Baler Information	
Bale Size	30" Deep x up to 30" High x 60" Width
Bale Volume (Cubic Ft)	31 Cu ft
Cycle Time	33 Seconds
Hydraulics	
Main Pumps	Two Stage
System Pressure	2300
Main Cylinder	Dual 4" Bore (x2), 2" Rod (x2), 32.25" Stroke (x2)
Overall Platen Force	57,805 Lbs
Oil Reservoir	11 Gallon
Electrical	
Main Motor	5 HP - 208/230/460v – 3 Phase
Controls	UL Listed

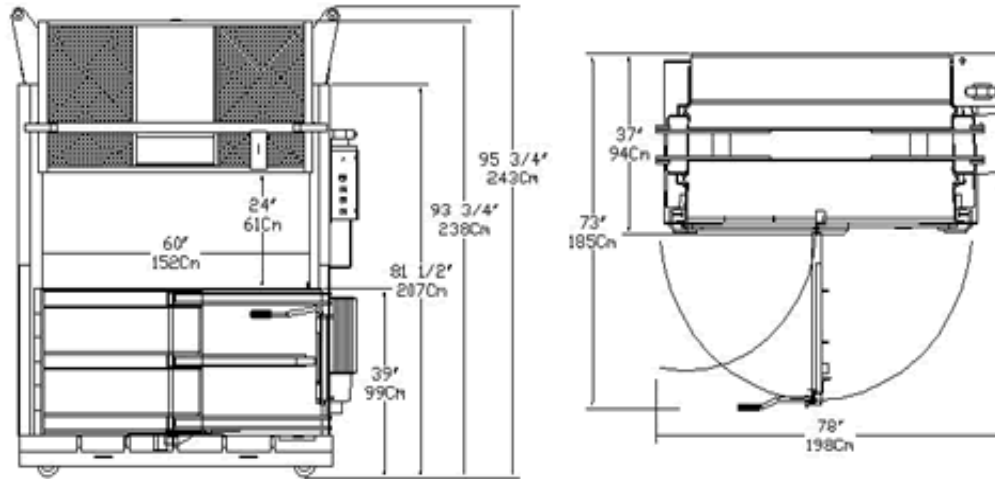
60" Extra Low Profile Vertical Baler Dimensions & Structural	
Operating Height	95.75
Width	78
Depth	37
Depth with Door Open	73
Shipping Height	81.5"
Frame Design	I Beams and Heavy Channel throughout
Feeding Opening	24" x 60"
Required Operating Area	39.5 Sq Ft
Weight	4,200 lbs

* **Note:** Specifications, Dimensions & other product details may vary slightly upon delivery due to continuous product progressions and improvement. If exactness is required on any item(s), confirm in writing before ordering. In our efforts to provide products with the most up to date engineering and design, we reserve the right to change specifications, dimensions and other product details without notice.

- Performance may vary depending upon application.
- Products must be installed and operated according to required standards, codes, regulations and safety procedures.

WasteCare Corporation www.wastecare.com **888-200-4100**

60" Extra Low Profile Vertical Baler Diagram - Model 60-LPVB



Note: Dimensions may be rounded (and unless indicated) do not include any recommended 'perimeter buffer'. If exactness is required, confirm in writing prior to ordering.

* **Note:** Specifications, Dimensions & other product details may vary slightly upon delivery due to continuous product progressions and improvement. If exactness is required on any item(s), confirm in writing before ordering. In our efforts to provide products with the most up to date engineering and design, we reserve the right to change specifications, dimensions and other product details without notice.

- Performance may vary depending upon application.
- Products must be installed and operated according to required standards, codes, regulations and safety procedures

WasteCare Corporation www.wastecare.com **888-200-4100**